

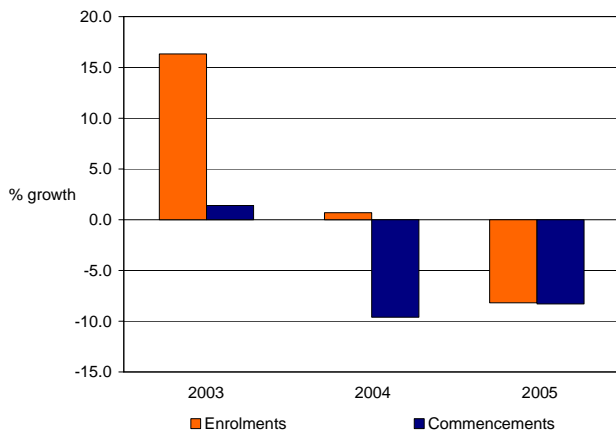


## International Student Enrolments\* in the Schools Sector in 2005

In 2005, there was negative growth in schools sector enrolments and commencements. Enrolments declined 8.2% and commencements, a measure of new student enrolments onshore, declined 8.3%.

The market has weakened after very good enrolment growth in 2003 (up 16.3% from 2002). However, there were signs of an impending decline, with only 1.4% commencements growth in 2003. The decline was seen in 2004, with only 0.7% enrolment growth and commencements falling by 9.6%.

**All International Student Enrolments – Schools**  
Percentage growth over previous year



In 2005, the three largest markets for schools sector enrolments were China, South Korea and Hong Kong. Enrolments and commencements fell from both China and Hong Kong. Both markets declined sharply after very healthy enrolments only two years earlier. In 2003, enrolment growth in China was 23.4% and in Hong Kong 11.6%. In 2005, growth was -13.7% and -11.6% respectively.

By contrast, South Korea, the second-largest market, showed small positive growth (3.6% in enrolments and 2.0% in commencements). Of the other top 10 markets, only Vietnam and Germany recorded positive growth.

At the state level, the decline in commencements over the past two years has been concentrated in New South Wales, Victoria, Western Australia and the territories. South Australia, Tasmania and Queensland have shown some growth albeit from a lower base. Commencements from South Korea, Germany and Vietnam grew in most states. However, the growth in these other markets has been overshadowed by the decline in China.

Nationality	Enrolments					Commencements				
	2002	2003	2004	2005	Growth on 2004	2002	2003	2004	2005	Growth on 2004
China	10,167	12,546	12,457	10,748	-13.7%	6,140	5,725	4,987	4,186	-16.1%
South Korea	2,821	3,788	4,393	4,553	3.6%	1,152	1,942	1,888	1,926	2.0%
Hong Kong	1,884	2,103	2,013	1,780	-11.6%	970	937	769	701	-8.8%
Japan	1,577	1,697	1,690	1,611	-4.7%	817	802	809	762	-5.8%
Thailand	789	901	897	808	-9.9%	366	349	296	261	-11.8%
<b>Sub-total</b>	<b>17,238</b>	<b>21,035</b>	<b>21,450</b>	<b>19,500</b>	<b>-9.1%</b>	<b>9,445</b>	<b>9,755</b>	<b>8,749</b>	<b>7,836</b>	<b>-10.4%</b>
Other countries	6,512	6,596	6,370	6,042	-5.1%	3,233	3,101	2,873	2,822	-1.8%
<b>Total</b>	<b>23,750</b>	<b>27,631</b>	<b>27,820</b>	<b>25,542</b>	<b>-8.2%</b>	<b>12,678</b>	<b>12,856</b>	<b>11,622</b>	<b>10,658</b>	<b>-8.3%</b>

State	Enrolments			Commencements		
	2005	Growth on 2004	% of 2005	2005	Growth on 2004	% of 2005
NSW	8,358	-13.0%	32.7%	3,304	-13.0%	32.7%
Vic.	7,503	-8.5%	29.4%	2,795	-10.4%	26.0%
Qld	4,349	-2.2%	17.0%	2,214	0.4%	20.7%
WA	2,221	-9.9%	8.7%	911	-16.2%	8.5%
SA	1,964	2.8%	7.7%	937	2.6%	8.8%
ACT	595	-3.1%	2.3%	219	-6.0%	2.0%
Tas.	426	1.9%	1.7%	246	13.4%	2.3%
NT	126	-17.1%	0.5%	32	-30.4%	0.3%
<b>Aust.</b>	<b>25,542</b>	<b>-8.2%</b>	<b>100.0%</b>	<b>10,658</b>	<b>-8.3%</b>	<b>100.0%</b>

Level Of Study	Enrolments			Commencements		
	2005	Growth on 2004	% of 2005	2005	Growth on 2004	% of 2005
Secondary School	23,291	-7.7%	91.2%	9,779	-8.2%	91.2%
Primary School <sup>1</sup>	2,251	-12.6%	8.8%	879	-9.2%	8.1%
<b>Total</b>	<b>25,542</b>	<b>-8.2%</b>	<b>100.0%</b>	<b>10,658</b>	<b>-8.3%</b>	<b>100.0%</b>

<sup>1</sup> Includes Kindergarten Studies.

More information is available at:  
<http://aei.dest.gov.au/AEI/MIP/Statistics/Default.htm>

\* AEI data on enrolments and commencements (including the data in this Snapshot) relate only to international students in Australia on a student visa.